

## Designation Schedule - Airways Corporation of New Zealand Ltd

<b>Number</b>	<b>Purpose</b>	<b>Location</b>
100	Receiving station	Seagrove Road (Allotment 121 PSH of Waiau), Waiau Pa
101	Aerodrome purposes - communications facility	600 Scenic Drive, Waiaatarua

## 100 Waiau Pa Receiving Station

Designation Number	100
Requiring Authority	Airways Corporation of New Zealand Ltd
Location	Seagrove Road (Allotment 121 PSH of Waiau), Waiau Pa
Rollover Designation	Yes
Legacy Reference	Designation 9, Auckland Council District Plan (Franklin Section) 2000
Lapse Date	Given effect to (i.e. no lapse date)

### Purpose

Receiving station.

### Conditions

No conditions.

### Attachments

No attachments.

## 101 Waitarua Communications Facility

Designation Number	101
Requiring Authority	Airways Corporation of New Zealand Ltd
Location	600 Scenic Drive, Waitakere
Rollover Designation	Yes
Legacy Reference	Designation ACNZ2, Auckland Council District Plan (Waitakere Section) 2003
Lapse Date	Given effect to (i.e. no lapse date)

### Purpose

The maintenance, operation, replacement and upgrade of communication facilities for aerodrome purposes, including all associated infrastructure.

### Conditions

1. To ensure that section 176A 3(f) of the Act has been adequately addressed, an outline plan shall include, as appropriate:
  - (a) A statement on the relevant Plan objectives, policies and rules;
  - (b) A statement on any adverse effects the works will have on the environment and the mitigation measures to be carried out;
  - (c) A visual impact and mitigation assessment where the proposed work is a new tower structure at Rua o te Whenua Designation 8527 (as provided for in Condition 5(a))

#### *Explanation:*

While it is accepted that the project or works will be (or should be) in accordance with the designated purpose, the Council wishes to be reasonably assured that the specific works to be carried out will not unnecessarily compromise the objectives, policies and rules of the Plan or adversely affect the environment. The Council's principal opportunity to influence the works to assist the requiring authority to meet its environmental responsibilities is through the outline plan, and the assessment of compliance and effects will assist it in determining whether to request changes.

2. Appropriate sedimentation and erosion control measures shall be employed for any earthworks on the designated site.

#### *Explanation:*

The Plan outlines erosion and sediment control measures for earthworks which are above a certain threshold, with that threshold varying according to the particular environment. Compliance with these measures would generally satisfy condition. Note that major earthworks may require a consent from the council.

3. All development on the site shall be within the "defined development area" as defined on plan number AL20963 sheets 1 and 2.
4. The maximum height of any development on the site shall be not more than 25.5 metres above ground level (excluding the ventilation cowl and lightning rod structures on top of the radome, which will be no more than 3.0m in height above the radome or 28 metres above ground level).
5. Development which is additional to that on the site as at 1 February 2000 (which included a tower structure, three "slim-line" masts, the Airways Corporation equipment building and the Transpower repeater building) shall be limited to:
  - (a) The replacement of the existing tower structure with another facility, provided that when the new facility is completed and commissioned, the existing tower is decommissioned and demolished:

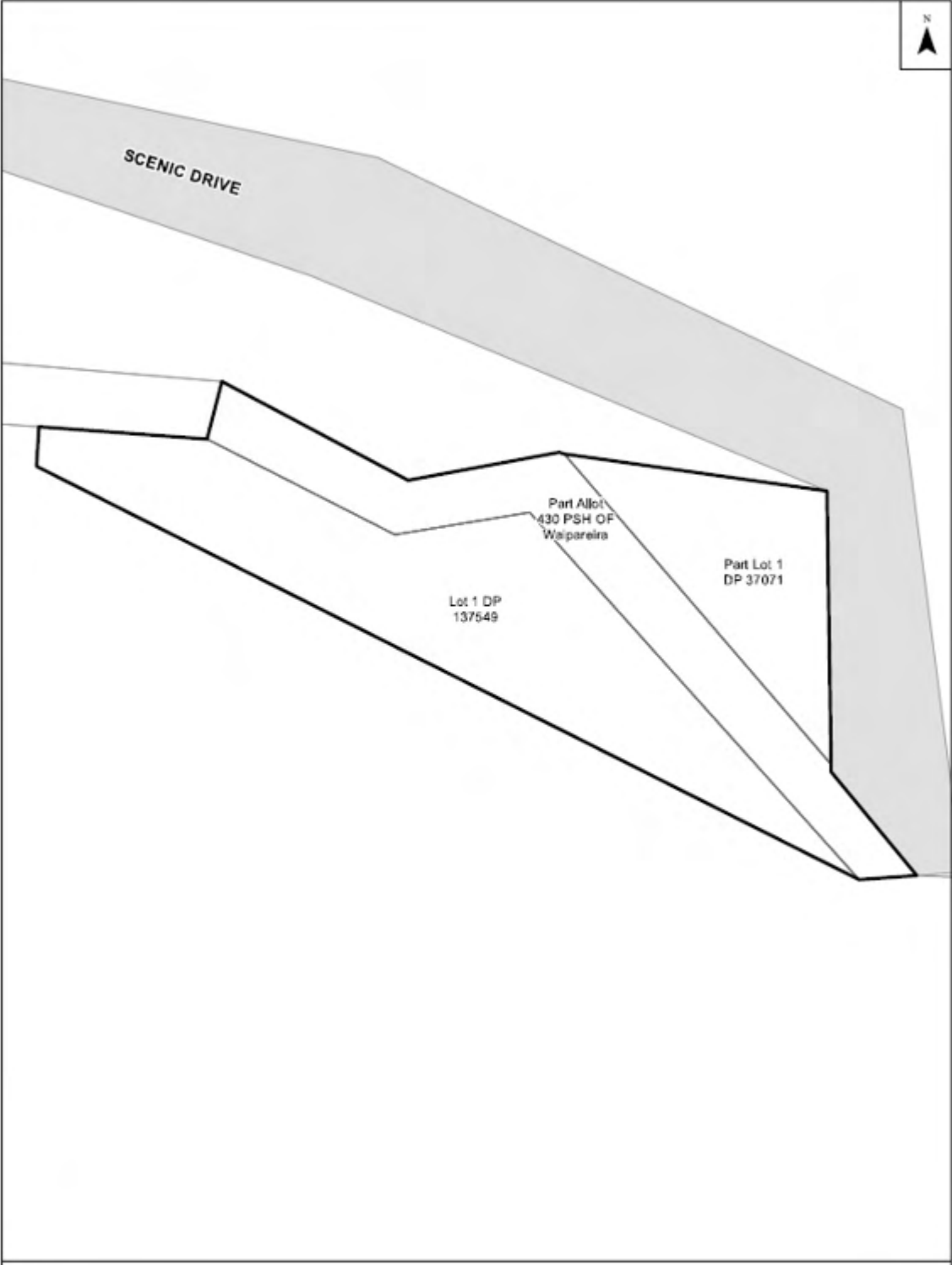
- (b) Antennae attached to the existing tower or new tower, existing buildings or new accessory buildings owned and operated by Airways Corporation New Zealand Limited (provided that these do not exceed the overall height limit of 25.5 metres as required by Condition 4);
  - (c) Up to four additional “slim-line” masts of similar design to the three existing masts;
  - (d) Accessory buildings with a maximum height of 4.5 metres; and
  - (e) The extension of the site access road
6. Native vegetation alteration (including removal) shall be restricted to:
- (a) Removal of vegetation from within the “defined development area”; and
  - (b) Removal or pruning of any vegetation which compromises the operation of the facility.

*Explanation (Conditions 3-6:*

It is noted that the site is also the subject of another designation (8527) and the above conditions apply to any development on the site. The site subject to this designation is visually prominent and substantially bush-clad. It contains communications facilities, including a dome radar tower, which have an important function for the region and beyond. The conditions are intended to provide for future development but to ensure such development is within a confined area of the site, and that natural and landscape values of the balance of the site are not compromised. The conditions are designed to allow the replacement of the existing dome radar tower, allowing the existing facility to continue to operate until the new facility is commissioned. The conditions are also intended to provide for the operation and limited expansion of other communications facilities on the site, specifically those for Airways Corporation and Transpower New Zealand Limited.

Attachment

2: Designation Plan



Ruaotuhenua VHF and SSR Station Site Plan AL 20963

