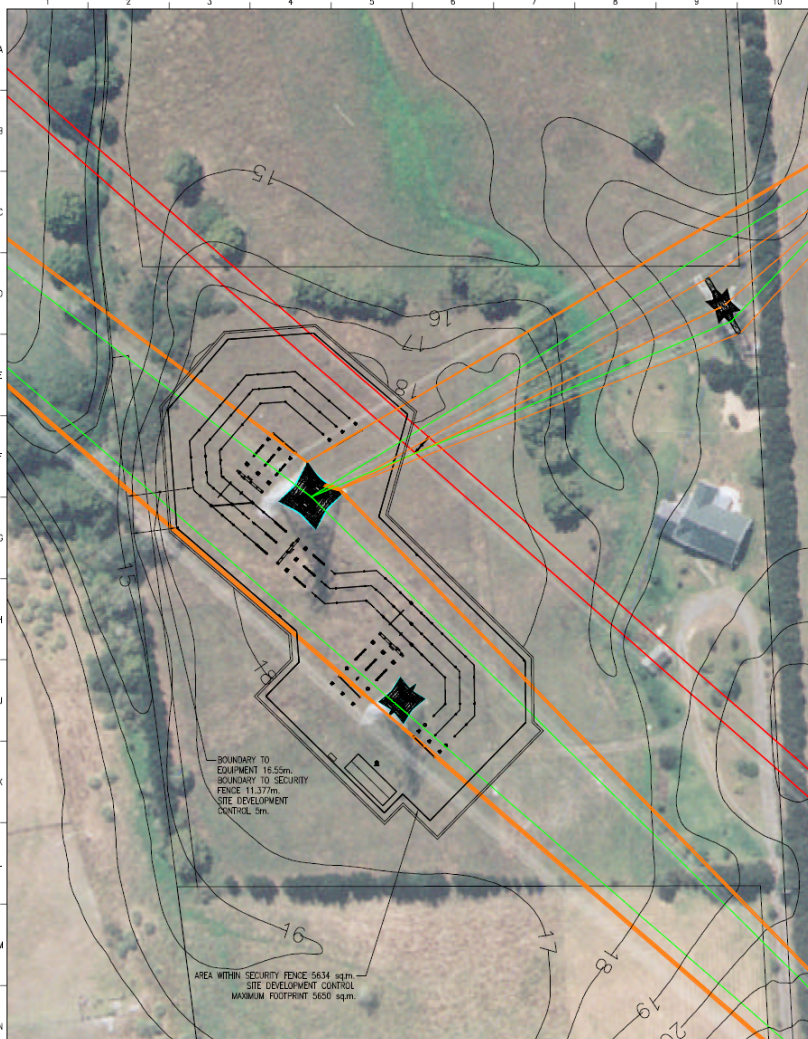


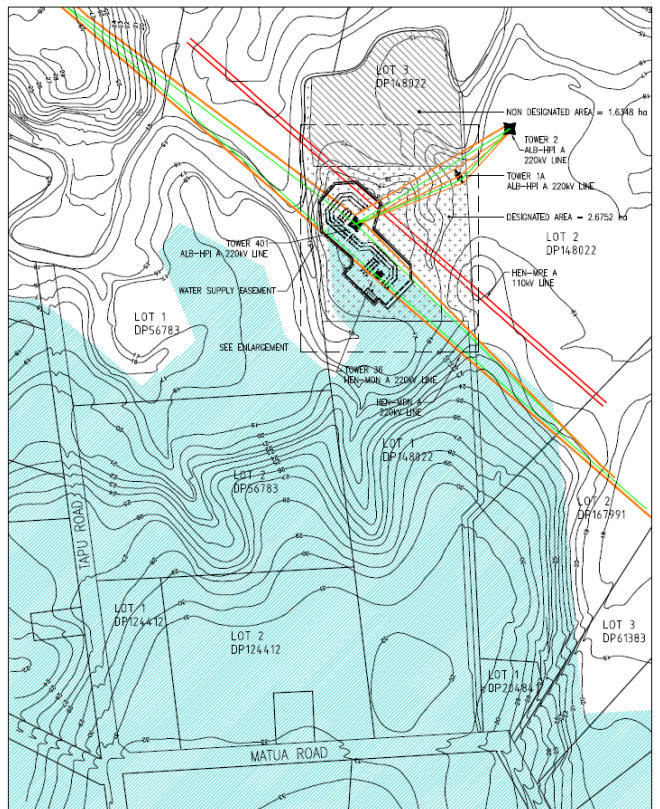
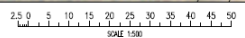
DRAWING NUMBER  
**TX41442**

© COPYRIGHT 2001 TRANS POWER NEW ZEALAND LTD.  
ALL RIGHTS RESERVED. UNAUTHORISED USE PROHIBITED.



BOUNDARY TO EQUIPMENT 16.55m  
BOUNDARY TO SECURITY FENCE 11.37m  
SITE DEVELOPMENT CONTROL 5m

AREA WITHIN SECURITY FENCE 6634 sqm  
SITE DEVELOPMENT CONTROL MAXIMUM FOOTPRINT 5650 sqm



**NOTES:**

1. ALL DIMENSIONS IN METRES.
2. SURVEY TO NZ MAP GRID COORDINATES IN TERMS OF GEODETIC DATUM 1949.
3. ALL GROUND LEVELS STATED IN METRES ABOVE MEAN SEA LEVEL (AMSL).
4. LEGEND -
  - ALB - ALBANY
  - HEN - HENDERSON
  - HPI - HUAIPAI
  - MN - MARSDEN
  - MPE - MAUNGATAPERE
5. ON THE AERIAL PHOTOGRAPHS, THERE MAY BE MINOR VISUAL DISTORTIONS BETWEEN AERIAL ELEMENTS (E.G. CONDUCTORS, TOWERS, ETC)
6. PROPOSED CONTOURS AS SHOWN.

REV	DESCRIPTION	CONSULTANT	NAME	DS91	DATE	DRN	DATE	CHK	DATE	QC	DATE	APP	DATE	APP	DATE	DESIGNED	BY	DATE	DRAWN	BY	DATE	CHECKED	BY	DATE	APP'D	DATE	PREPARED BY	DATE	
A	DIMENSIONS FROM BOUNDARY ADDED, SITE AREA REVISED.			RL	5/01	MP	5/21	RL	5/01							GENERATED	N	5/01	5	ALB/CH									
B	NEW WELL REVISION, AND FOOTPRINT AREA WAS 2250 sqm.			RL	9/01	MP	9/20	RL	9/20							DESIGNED	N	5/01	5	ALB/CH									
																TP APPROVED	N	5/01											
																PREPARED BY	N	5/01											
																Metric Ltd (6282610)													
																PO Box 27-277, 185 Wilyp Street, BLENHEIM													

**HUAIPAI SWITCHING STATION**

**108 MATUA ROAD  
PROPOSED LAYOUT**

SCALE AS NOTED	FOLDER H41/1A1
DRAWING NUMBER <b>TX41442</b>	REVISION <b>B</b>
CAD FILE NAME TX41442.DWG	

**TRANSPOWER**

A1