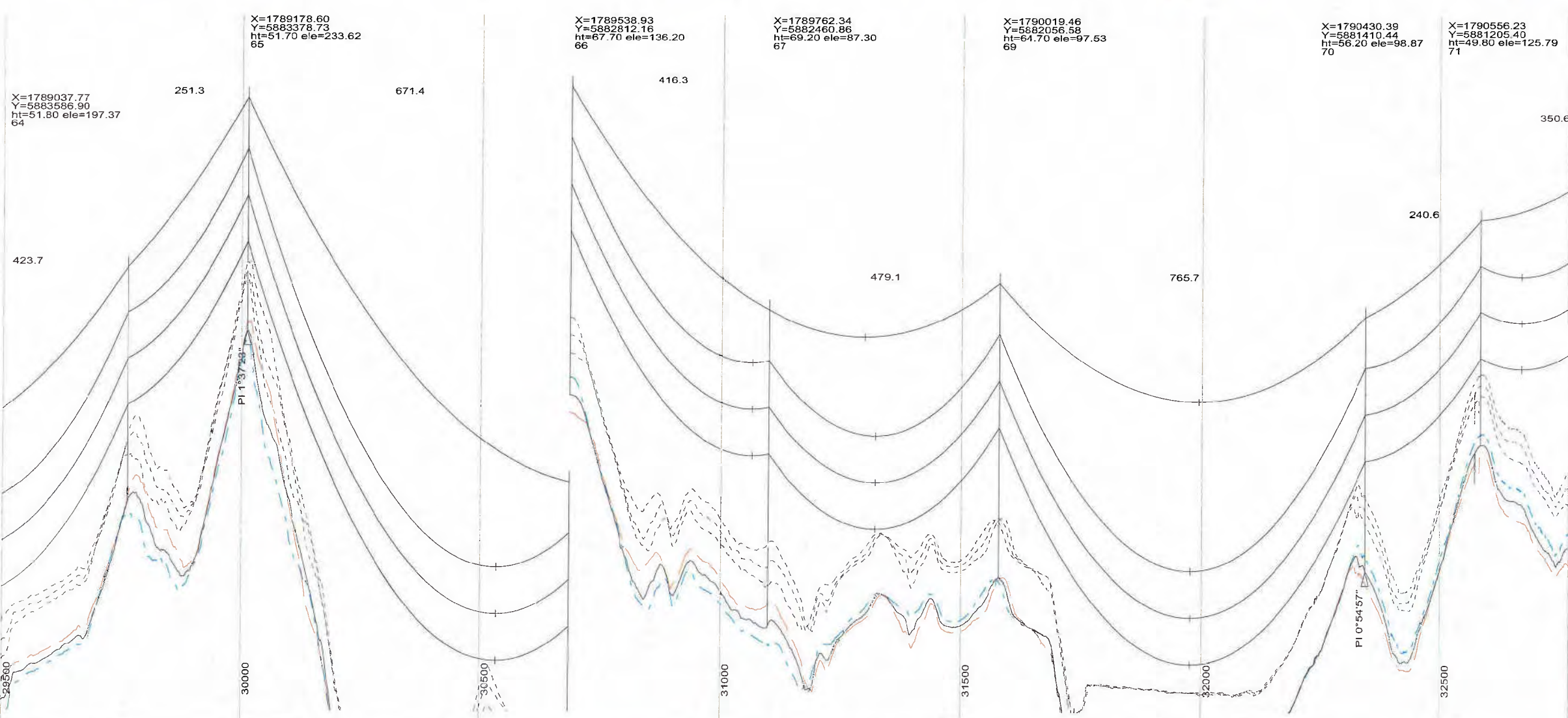
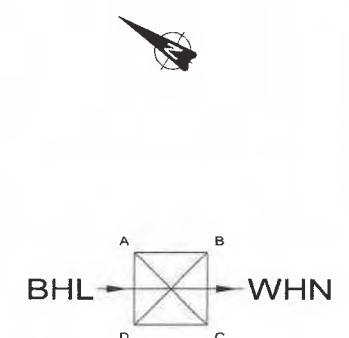
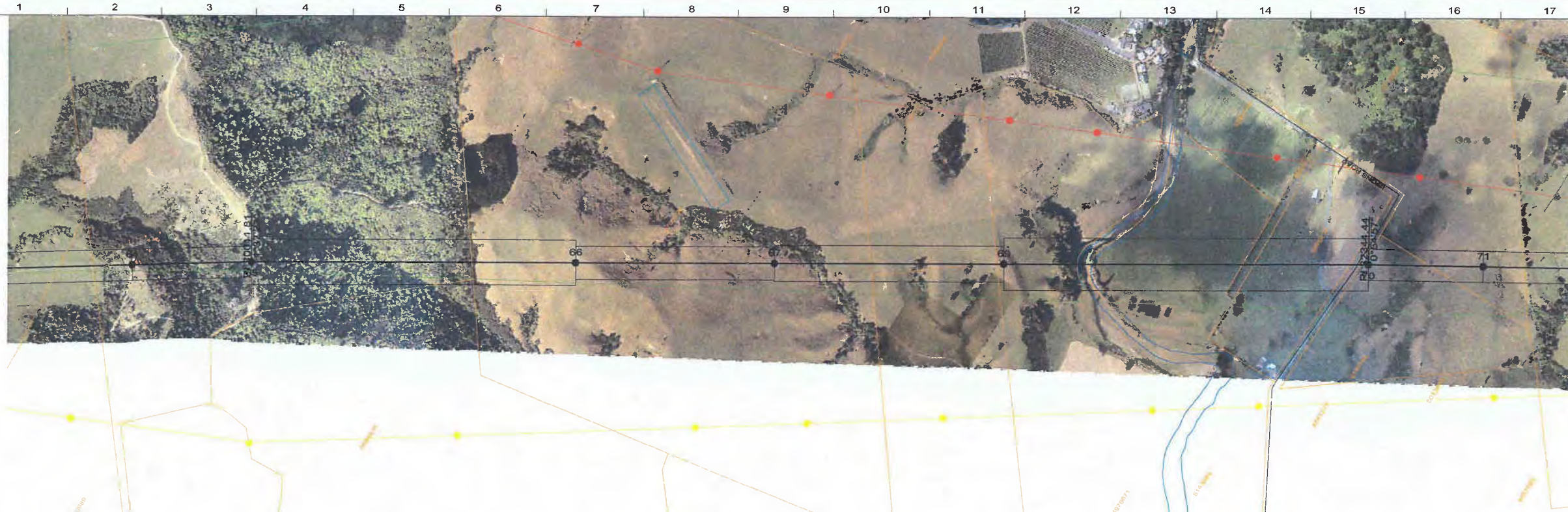
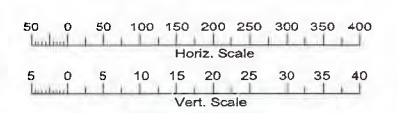


© ALL RIGHTS RESERVED. UNAUTHORISED USE PROHIBITED.



- NOTES:**
- BASED ON ALS SURVEY DATA FLOWN 02/05.
 - SURVEY TO NZ GEODETIC DATUM 2000.
 - NZ TRANSVERSE MERCATOR PROJECTION.
 - REDUCED LEVELS (RL) ARE TO NZ GEODETIC DATUM 2000 IN METRES ABOVE ELLIPSOID OF THE DATUM.
 - SCALES: HORIZONTAL = 1:5000
VERTICAL = 1:500
 - CONDUCTORS: TRIPLEX 61/3.75mm AAAC/1120 (SHOWN AT MAXIMUM OPERATING TEMPERATURE)
 - GROUND CLEARANCE (DASHED LINE) SHOWN AT 12.7m. CENTRELINE WIDTH OF 1m. SIDE PROFILES SHOWN AT 11m.
 - EASEMENT WIDTHS SHOWN ARE AS AT APRIL 2007. (MINIMUM EASEMENT WIDTH: 65m.)
 - PLAN & PROFILE LINE COLOURS:
 - ROAD CENTRELINE
 - PARCEL BOUNDARIES
 - ROUTE BOUNDARIES
 - WATERWAYS
 - AIRPORTS/AIRSTRIPS
 - CE II COVENANTS
 - EXISTING 220KV OVERHEAD LINE
 - EXISTING 110KV OVERHEAD LINE
 - LHS SIDE PROFILE
 - RHS SIDE PROFILE
 - PLAN & PROFILE LABELS/SYMBOLS:
 - STRUCTURE LOCATION
 - EXISTING 110KV TOWERS
 - EXISTING 220KV TOWERS
 - STRUCTURE LABELS:
 - X = EASTING
 - Y = NORTHING
 - ht = STRUCT. HEIGHT ele = GROUND RL
 - # = STRUCT. NUMBER



THIS DOCUMENT IS PRODUCED FOR EXTERNAL RELEASE. ITS CONCLUSIONS ARE BASED ON THE INFORMATION CURRENTLY AVAILABLE TO TRANSPOWER AND MAY CHANGE AS FURTHER INFORMATION BECOMES AVAILABLE EITHER INTERNALLY OR EXTERNALLY.

REV	DESCRIPTION
P B	FINAL CENTRELINE - FOR ISSUE WITH NoR (2007)

CONSULTANT										TP		DESIGNED	TRANSPOWER - ADG LINE	13/11/2006
NAME	DSN	DATE	DRN	DATE	CHK	DATE	APP	DATE	APP	DATE	DRAWN	PLS-CADD	13/11/2006	
TP	ADG	04/07	PLS	04/07	RN	04/07	RL	04/07	RN	04/07	CHECKED	R. NOBLE	13/11/2006	
											APPROVED	R. LAKE	13/11/2006	
											TP APPROVED	R. NOBLE	13/11/2006	
PREPARED BY: TRANSPOWER NZ LTD														
												ADGL		



NORTH ISLAND GRID UPGRADE PROJECT

**FINAL CENTRELINE
PLAN & PROFILES
STRUCTURES: 64 TO 71**

DRG. SIZE	SCALE	FOLDER
A1	SEE NOTE 5	-
DRAWING NUMBER		SHEET
NIGUP-NOR		11/63
PLS-CADD MODEL DETAILS		REVISION
MODEL NAME: BHL-WHN A TRIPLEX 61-3.75MM AAAC-1120		B
LINE NAME: NoR - 61/3.75mm AAAC/1120 @ 75°C (v2)		

DATE PRINTED 29/01/2008