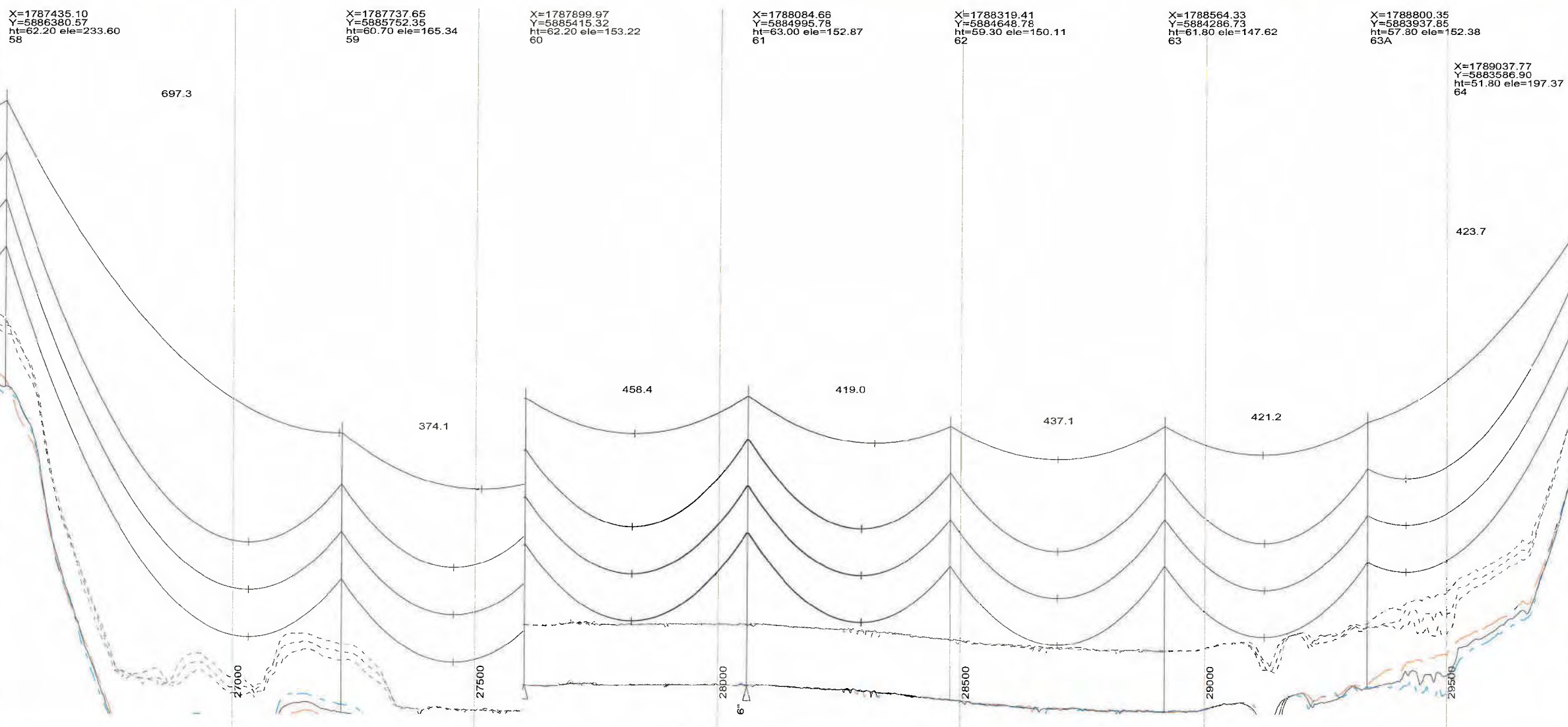
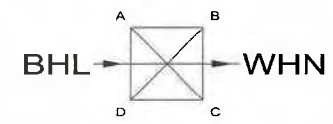
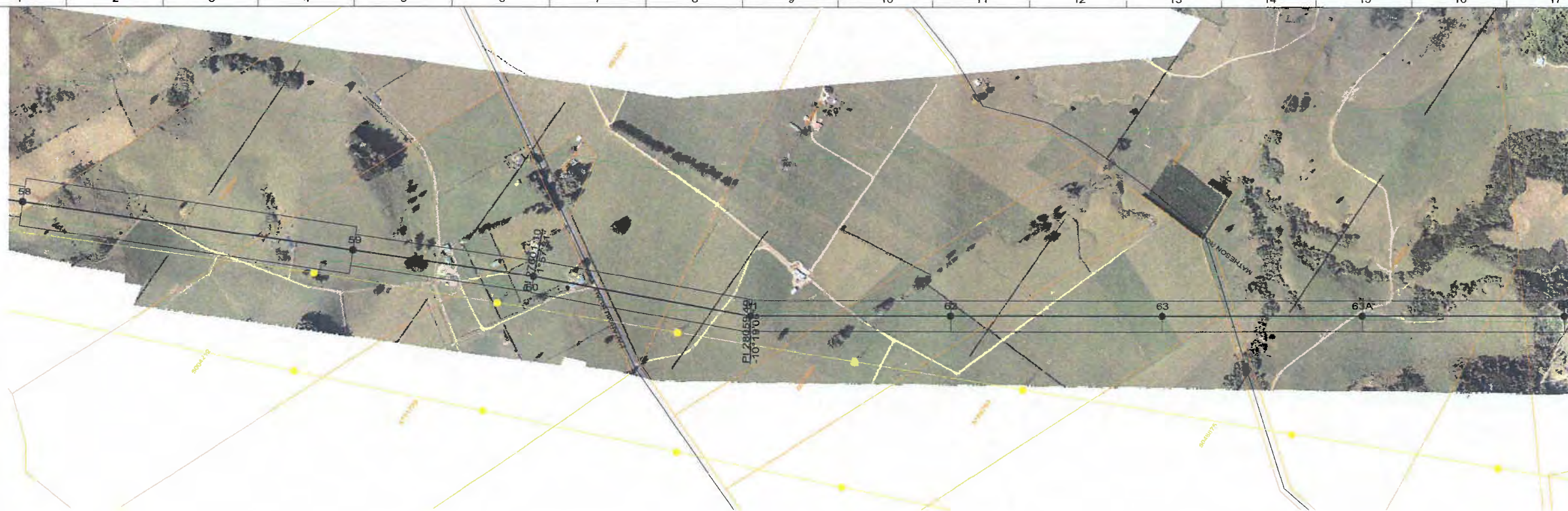
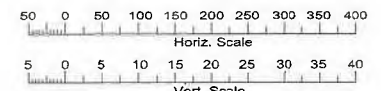


HT 20 NSPC NEW ZEALAND LTD. ALL RIGHTS RESERVED. UNAUTHORISED USE PROHIBITED.

PLS-CADD Drawing



- NOTES:**
- BASED ON ALS SURVEY DATA FLOWN 02/05.
 - SURVEY TO NZ GEODETIC DATUM 2000.
 - NZ TRANSVERSE MERCATOR PROJECTION.
 - REDUCED LEVELS (RL) ARE TO NZ GEODETIC DATUM 2000 IN METRES ABOVE ELLIPSOID OF THE DATUM.
 - SCALES: HORIZONTAL = 1:5000
VERTICAL = 1:500
 - CONDUCTORS: TRIPLEX 61/3 75mm AAAC/1120 (SHOWN AT MAXIMUM OPERATING TEMPERATURE)
 - GROUND CLEARANCE (DASHED LINE) SHOWN AT 12.7m.
CENTRELINE WIDTH OF 1m.
SIDE PROFILES SHOWN AT 11m.
 - EASEMENT WIDTHS SHOWN ARE AS AT APRIL 2007.
(MINIMUM EASEMENT WIDTH: 65m.)
 - PLAN & PROFILE LINE COLOURS:
- ROAD CENTRELINE
 - PARCEL BOUNDARIES
 - ROUTE BOUNDARIES
 - WATERWAYS
 - AIRPORTS/AIRSTRIPS
 - GE II COVENANTS
 - EXISTING 220KV OVERHEAD LINE
 - EXISTING 110KV OVERHEAD LINE
 - LHS SIDE PROFILE
 - RHS SIDE PROFILE
- 10. PLAN & PROFILE LABELS/SYMBOLS:**
- STRUCTURE LOCATION
 - EXISTING 110KV TOWERS
 - EXISTING 220KV TOWERS
- 11. STRUCTURE LABELS:**
- X = EASTING
 - Y = NORTHING
 - ht = STRUCT. HEIGHT ele = GROUND RL
 - # = STRUCT. NUMBER



THIS DOCUMENT IS PRODUCED FOR EXTERNAL RELEASE. ITS CONCLUSIONS ARE BASED ON THE INFORMATION CURRENTLY AVAILABLE TO TRANSPOWER AND MAY CHANGE AS FURTHER INFORMATION BECOMES AVAILABLE EITHER INTERNALLY OR EXTERNALLY.

REV	DESCRIPTION
B	FINAL CENTRELINE - FOR ISSUE WITH NoR (2007)

CONSULTANT										TP	
NAME	DSN	DATE	DRN	DATE	CHK	DATE	APP	DATE	APP	DATE	DATE
TP	ADG	04/07	PLS	04/07	RN	04/07	RL	04/07	RN	04/07	

DESIGNED	TRANSPOWER - ADG LINES	13/11/2006
DRAWN	PLS-CADD	13/11/2006
CHECKED	R. NOBLE	13/11/2006
APPROVED	R. LAKE	13/11/2006
TP APPROVED	R. NOBLE	13/11/2006
PREPARED BY:	TRANSPOWER NZ LTD	
	ADGL	



TRANSPOWER

NORTH ISLAND GRID UPGRADE PROJECT

**FINAL CENTRELINE
PLAN & PROFILES
STRUCTURES: 58 TO 64**

DRG. SIZE	SCALE	FOLDER
A1	SEE NOTE 5	-
DRAWING NUMBER	SHEET	REVISION
NIGUP-NOR	10/63	B
PLS-CADD MODEL DETAILS		
MODEL NAME: BHL-WHN A TRIPLEX 61-3.75MM AAAC-1120		
LINE NAME: NoR - 61/3.75mm AAAC/1120 @ 75°C (v2)		

DATE PRINTED: 28/01/2008